

# ECHO-FLEX 4800-G

## Advanced treatment table

### 4800-G Must configuration

Included features:

- » 7.6 cm / 3" High-density foam mattress
- » 43.2 x 15.2 cm / 17" x 6" Retractable side rails
- » 12.7 cm / 5" Twin wheels with central lock
- » Triple hand controller
- » Gynecological stirrups

### 4800-G Comfort configuration

Included features:

- » 4800-G Must configuration
- » Rechargeable battery pack
- » 10.1 cm / 4" Mattress with OB opening (instead of the 7.6 cm / 3" mattress)

### 4800-GT Trendelenburg configuration

Included features:

- » 4800-G Indispensable configuration
- » Trendelenburg -12°
- » Quadruple hand controller

### Additional options available

- » ARM-BG: 50.8 x 15.2 cm / 20" x 6" Removable and swivel arm support
- » ARM-BG2: 50.8 x 30.5 cm / 20" x 12" Removable and swivel arm support
- » CA-10: 22.9 x 25.4 cm / 9" x 10" Cardiac opening on the left side in the backrest
- » PD-1S: Single foot controller
- » PD-1: Double foot controller
- » PD-3: Triple foot controller
- » PD-4: Quadruple foot controller (4800-GT)
- » PP-1: Retractable transport handles at head end
- » TP-1: Fixed transport handle at head end
- » SP-1: 50.8 cm / 20" Paper dispenser
- » PT-7: Stainless steel I.V. Pole (removable)

## Specifications

### Adjustments

- Height: 53.3 to 99 cm / 21" to 39"
- Backrest: 0° to 80°
- Legs: 0° to 90°
- Trendelenburg: -12°

### Maximum weight capacity

- 205 kg / 450 lb using hospital-grade electrical components
- 120V - 2.7 AMP - 60 Hz

### Dimensions

- Standard: 68.6 x 180.3 cm / 27" x 71"

### Côtés sécuritaires

- 43.2 x 15.2 cm / 17" x 6" Retractable side rails

### Mattress

- 7.6 cm / 3" Thick
- 10.1 cm / 4" Thick\*
- Vinyl upholstery resistant to Oxivir and Virox

### Controls

- Hand controller
- Foot controller\*\*

### Wheels

- 12,7 cm / 5" Twin wheels with central lock

\* 4800-G Comfort configuration  
\*\* Optional



# ECHO-FLEX 4800-G

## Advanced treatment table

902-9000-ENG R1 / Copyright © 2023 IBIOM / Umano Medical Inc. 2023 / Printed in Canada

# ECHO-FLEX 4800-G

## Advanced treatment table

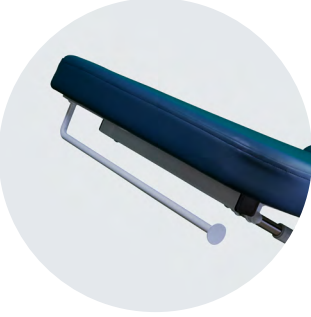
Reduces hyperextension work, occupational injuries and work stoppages by promoting an ergonomic position thanks to multiple adjustments.

**Cleaning:** The vinyl upholstery is tested for common cleaning products used in hospitals and clinics. It is resistant to Oxivir and Virox; imperative when infection control is a priority.



**URGENCE**  
This exam table can go into Trendelenburg -12° by selecting the 4800-GT Trendelenburg configuration.

Fowler can adjustable from 0 to 80° using the controller.



50.8 cm / 20"  
Paper dispenser.

Standard fixed handles help patients to move themselves on the exam table.

Removable and soft, these stirrups are more comfortable and less cold than standard stirrups.

Leg section can be adjustable from 0 to -90° using the controller.

Maximum weight capacity:  
205 kg / 450 lb using hospital-grade electrical components.  
120V - 2.7 AMP - 60 Hz.

For better access during gynecology exams (available only with 10.1 cm / 4" mattress).

Standard: 7.6 cm / 3"  
high-density foam mattress (without removable cushion).

Optional: 10.1 cm / 4"  
high-density foam mattress (without removable cushion).



Rechargeable battery pack.

Height adjustment:  
53.3 to 99 cm / 21" to 39"

12.7 cm / 5" Twin wheels with central lock.

- Colors:**
- Denim Blue
  - Raven
  - Other on request



Entirely designed and manufactured in Canada, locally manufactures offers you easy access to spare parts and customer service in English and French.



Hand controller.



Single, double or triple foot controller available for hands-free patient adjustment.



Fixed (at the head) or retractable (at the foot) transport handles are available for easy maneuvering of the exam table.



Stainless steel I.V. pole.