

# TRIAD

Treatment chair for dialysis,  
oncology, chemotherapy

## TRIAD Must configuration

Included features:

- » Fixed transport handles
- » Electrically adjustable footrest
- » 12.7 cm / 5” Twin wheels with central lock
- » Hand controller
- » Pivoting armrests, synchronized with backrest
- » Electric Trendelenburg 8.8 sec.
- » Seamless moulded cushions
- » Moulded viscose foam pillow

## TRIAD Comfort configuration

Included features:

- » TRIAD Must configuration
- » 43.2 x 33 cm / 17” x 13” Swivel table that can be installed on right or left of patient
- » Emergency foot controller for safe and hands-free Trendelenburg in 8.8 seconds
- » Rechargeable battery pack

## Additional options available

- » SEP-01: Closure plates under armrests
- » SHELF-TAB: Retractable tray table 15.2 x 30.5 cm / 6” x 12” positioned on each armrest
- » FC-2: Rear central lock pedals only
- » FRT-2: Credit for removing electric footrest

## Accessories

- » CU6-FR-TRIAD: Footrest cushion for short people
- » MEBT: Mini exercise bike which can be mounted on the footrest to exercise during treatment

# Specifications

## Adjustments

- Height: 51 to 71 cm / 20” to 28”
- Backrest: 0° to 80°
- Footrest: 15.2 cm / 6”
- Legs: 0° to -50°
- Trendelenburg: -10°

## Maximum weight capacity

- 205 kg / 450 lb using hospital-grade electrical components
- 120V - 3.9 AMP - 60 Hz

## Dimensions

- Standard: 61 x 195.6 cm / 24” x 77”
- Armrests: 48.9 x 18.4 cm / 19.25” x 7.25”

## Cushions

- Molded for comfort and durability
- Seamless to help prevent infection
- Vinyl upholstery resistant to Oxivir and Virox

## Controls

- Hand controller

## Wheels

- 12.7 cm / 5” Twin wheels with central lock



# TRIAD

Treatment chair for dialysis,  
oncology, chemotherapy

904-9000-ENG R1 / Copyright © 2023 IBIOM / Umano Medical Inc. 2023 / Printed in Canada



# TRIAD Treatment chair for dialysis, oncology, chemotherapy

Reduces handling time while improving comfort and safety.

The chair features comfortable and durable cushions designed to reduce pressure points while maintaining lumbar support. The seat is also designed to help the patient maintain a good position during treatment. The cushions are fully moulded and seamless with injected viscose foam.

**Cleaning:** The vinyl upholstery is tested for common cleaning products used in hospitals and clinics. It is resistant to Oxivir and Virox; imperative when infection control is a priority.



Rechargeable battery pack.

Height adjustment:  
51 to 71 cm / 20 to 28".

The electrically adjustable footrest helps patients to relieve cramps

15.2 cm / 6" Electric adjustment  
7.6 cm / 3" Mechanical adjustment.

Maximum weight capacity:  
205 kg / 450 lb using hospital-grade electrical components.  
120V - 3.9 AMP - 60 Hz.

Easily maneuverable, the removable swivel table tray can be moved from one side to the other.

Moulded viscose foam pillow for more comfort.

The transport handle also protects the cushion from impacts.

The arms can swivel for easy access. They are synchronized with the backrest for more patient comfort.

They can also swivel inwards so that smaller patients can use them.

Closure plates.

12.7 cm / 5" Twin wheels with central lock.

12.7 cm / 5" Free space to facilitate the use of a patient lift.

## Standard colors:

-  Sky Blue
-  Gunmetal

## Special order:

-  Cobalt
-  Wedgewood
-  Desert Rose
-  Ash

Entirely designed and manufactured in Canada, locally manufactures offers you easy access to spare parts and customer service in English and French.



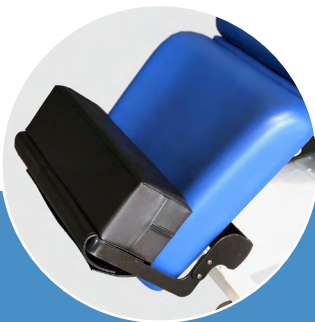
Emergency foot controller to position the patient in Trendelenburg while keeping hands free.



Trendelenburg -10° is effortless and requires only 8.8 sec.



Retractable tray table positioned to each armrest.



Footrest cushion for smaller people.



Easy-to-use hand controller.



Mini exercise bike which can be mounted on the footrest to exercise during treatment.