

TRIAD

Treatment chair for dialysis,
oncology, chemotherapy

TRIAD Must configuration

Included features:

- » Fixed moving handles
- » Electrically adjustable footrest
- » 12.7 cm / 5" Twin wheels with central lock
- » Hand control
- » Pivoting armrests, synchronized with backrest
- » Electric Trendelenburg 8.8 sec.
- » Seamless moulded cushions
- » Moulded viscose foam pillow

TRIAD Comfort configuration

Included features:

- » TRIAD Must configuration
- » 43.2 x 33 cm / 17" x 13" Swivel table that can be installed on right or left of patient
- » Foot control to position the patient in Trendelenburg position while keeping your hands free to perform manoeuvres
- » Rechargeable battery pack

Additional options available

- » Closure plates under armrests
- » Retractable tray table 15.2 x 30.5 cm / 6" x 12" positioned on each armrest
- » Rear central lock pedals only
- » Credit for removing electric footrest

Accessories

- » CU6-FR-TRIAD: Footrest cushion for short people
- » MEBT: Mini exercise bike which can be mounted on the footrest to exercise during treatment

Specifications

Adjustments

- Height: 51 to 71 cm / 20" to 28"
- Backrest: -10° to 70°
- Footrest: 15.2 cm / 6"
- Legs: -40° to 10°
- Trendelenburg: -10°

Maximum weight capacity

- 205 kg / 450 lb using medical-grade electrical components
- 120V - 3.9 AMP - 60 Hz

Dimensions

- **Standard**
Prone position with armrests: 211 x 97cm / 83" x 38"
Sitting without armrests: 152 x 61cm / 60" x 24"
- **Armrests:** 48 x 18 cm / 19" x 7"

Cushions

- Molded for comfort and durability
- Seamless to help prevent infection
- Vinyl upholstery resistant to Oxivir and Virox

Controls

- 5 functions hand control

Wheels

- 12.7 cm / 5" Twin wheels with central lock



TRIAD

Treatment chair for dialysis,
oncology, chemotherapy

TRIAD Treatment chair for dialysis, oncology, chemotherapy

Reduces handling time while improving comfort and safety.

The chair features comfortable and durable cushions designed to reduce pressure points while maintaining lumbar support. The seat is also designed to help the patient maintain a good position during treatment. The cushions are fully moulded and seamless with viscose foam.

Cleaning: The vinyl upholstery is tested for common cleaning products used in hospitals and clinics. It is resistant to Oxivir and Virox; imperative when infection control is a priority.



Rechargeable battery pack.

Height adjustment:
51 to 71 cm / 20 to 28".

The electrically adjustable footrest helps patients to relieve cramps
15.2 cm / 6" Electric adjustment
7.6 cm / 3" Mechanical adjustment.

Maximum weight capacity:
205 kg / 450 lb using medical-grade electrical components.
120V - 3.9 AMP - 60 Hz.

Standard colors:

- Sky Blue
- Grey Metal

Special order:

- Cobalt
- Wedgewood
- Desert Rose
- Ash



Entirely designed and manufactured in Canada, IBIOM by Umano Medical offers you easy access to spare parts and customer service in English and French.



The armrests can swivel for easy access. They are synchronized with the backrest for more patient comfort.

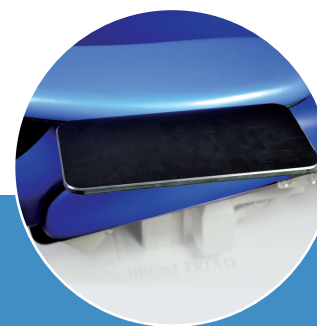
They can also swivel inwards so that smaller patients can use them.



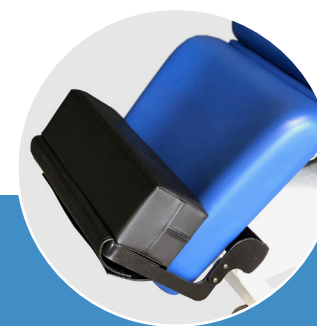
Foot control to position the patient in Trendelenburg while keeping hands free.



Trendelenburg -10° is effortless and requires only 8.8 sec.



Retractable tray table positioned to each armrest.



Footrest cushion for smaller people.



Easy-to-use hand control.



Mini exercise bike which can be mounted on the footrest to exercise during treatment.