

On average, a work accident represents \$67,000 in costs attributed to the various treatments and also for planning a possible return to work.

If your center uses fixed furniture, a patient who becomes unwell could quickly fall to the floor, a relatively common occurrence during a blood draw. The patient must then be moved by staff on a stretcher. This task is now eliminated with the use of a HEMA+ chair.

Ergonomic Blood Drawing Centers

Patient seating



INO CURA Model
with XL arm, suitable for treatments, such as blood sampling and vaccinations.



HEMA+ Model
Adjustable armchair offering the Emergency Trendelenburg position, central lock and much more.



AirCentric 2
Several models available according to your needs.



Capisco

Waiting room



ALOE Chair
Available in versions 21", 24" or 30" wide.



670 Joseph-Louis-Mathieu St
Sherbrooke QC Canada J1R 0X3

info@ibiom.com
1 877 563-5777

www.ibiom.com

COPYRIGHT © 2021 IBIOM INSTRUMENTS // ALL RIGHTS RESERVED



www.ibiom.com



Durability

Ergonomics

Infection control

Comfort

Security

How can the design of a blood sampling station reduce the risk of staff injury? Increase patient safety? And make the environment a more pleasant place to be?

For several years, IBIOM has been working with the preventionists of the Eastern Townships to optimize ergonomics and make their multiple collection centers safer. This collaboration first saw the birth of the HEMA+ chair, then, a wide variety of adjustable sampling stations and reception stations.

Since each town has different facilities, we travelled throughout the Eastern Townships to understand the needs of each one. Our service is distinguished by the goal of designing a space where the caregivers will feel comfortable and where the patients will be safe.

Do you want to improve or optimize your collection center? Reduce work stoppages? Accelerate the return to work of staff currently on leave?

Here is our proposal:

- Exchanging and listening to the needs of users and preventionists;
- Designing of custom-made furniture;
 - Customized adjustable workstation with a chemical-resistant surface;
 - Ergonomic accessories;
 - Openings and supports for biohazard containers;
 - Adjustable shelves;
 - Ergonomic chairs for staff;
 - HEMA+ patient collection chairs;
 - Any other ancillary furniture required.

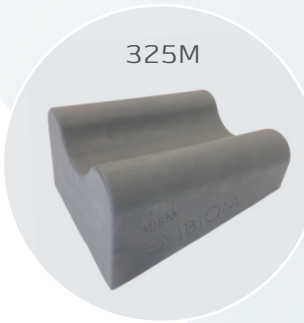
All this, while offering you a detailed plan allowing you to visualize the available space.

We take care of everything and we will schedule delivery at the agreed time.

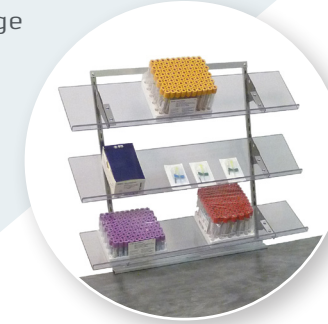
This offer has been greatly appreciated and the demand is growing. The design of custom adjustable tables is also offered to other departments such as laboratories, operating rooms and reception areas.

Need to adjust the height of a 600 lb fume hood? Why not!

Armrest for samples made of silicone.



Supports of adjustable shelves with edge for tubes.



Coating resistant to cleaning products.

Possibility of positioning opening for biohazard containers.

Adjustable in height from 22.5 to 32.5 in.

3500E Standard station for right or left handed users



Monitor arms and ergonomic keyboard tray available.



Standard anti-collision system.

Custom design according to your space.



Adjustable height from 23.5 to 49 inches.



Bluetooth switch with display and memories.