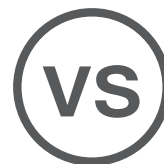


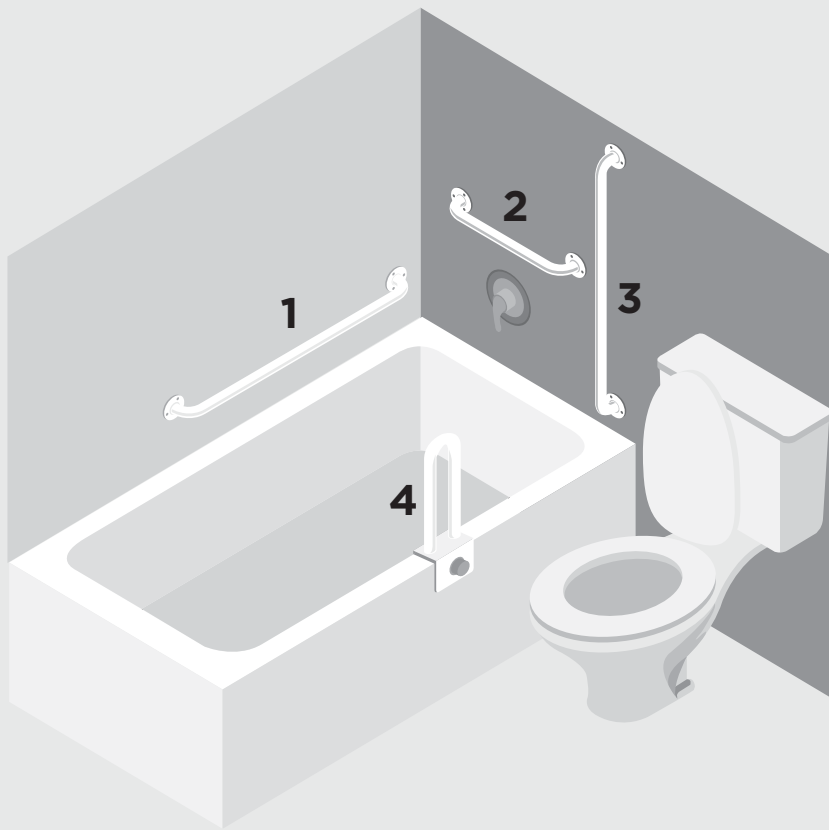


Fixed Grab Bar



Dependa-Bar

Reduce Clutter. Optimize Support.

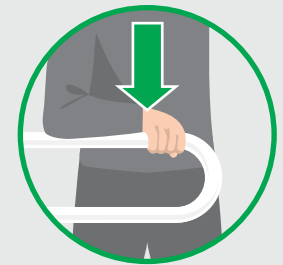
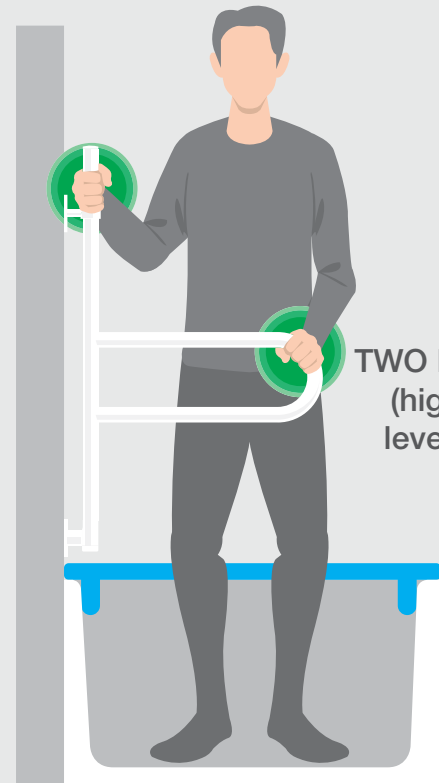
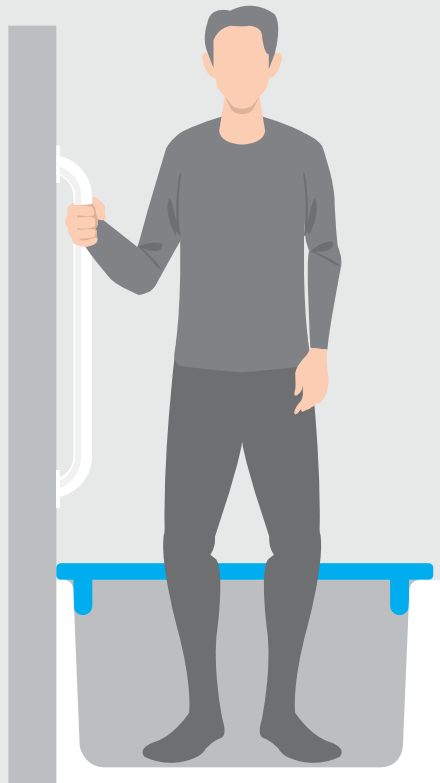


Since grab bars provide 'static' or 'fixed' support, multiple installations are required to provide full support in bathing motions.



The Dependa-Bar is designed for complete bathtub and shower support that in some cases, replace the need for multiple grab bars. The horizontal rail moves and locks every 45 degrees, to create a comfortable and ergonomic weight-bearing support.

Optimize Leverage.



ONE HAND

TWO HANDS
(high for
leverage)



TWO HANDS
(in front)

A fixed grab bar can only provide support on one side of the client. This provides minimal gripping options and limits proper leverage the client can produce while using the grab bar.

When the Dependa-Bar is pivoted out from the wall, it locates support in front of the user. This provides the user with gripping options depending on their needs (pushing, pulling, leaning, etc.).

Centralized Support.



Fixed grab bars only provide support on one side, where clients often reach for support with their free hand (seats, walls, tub thresholds). This can result in unbalanced situations and greater fall risks.



The Dependa-Bar moves with the user and locks into place where needed, a fully balanced and centralized support is created. This ergonomic solution reduces fall risks and allows for easier sitting and standing in the tub.

No Twist. Better Safety.



If the client has an injury (broken arm, paralysis, etc.) that hinders the side closest to a fixed grab bar, they will be forced to twist their body to reach with their stronger side. This twisting action increases the risk of injury and falls.

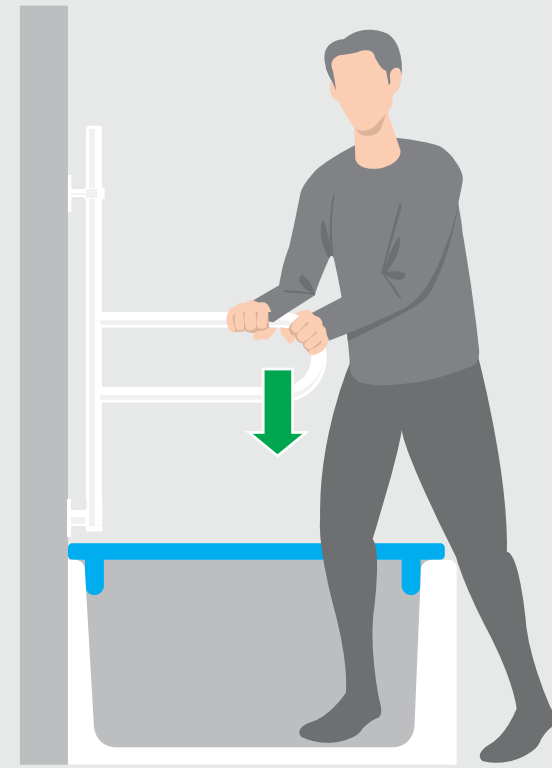


With the Dependa-Bar pivoted out from the wall, the support is located in front of the client. This position maximizes the clients' abilities, and eliminates dangerous body twisting.

No Reaching. No Falls.

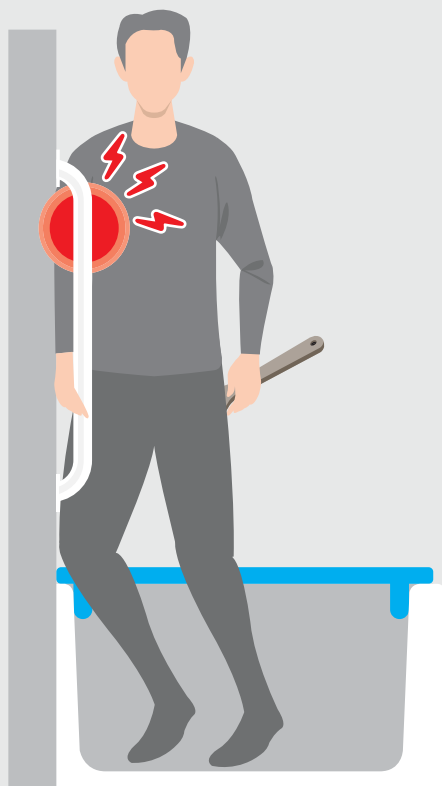


A grab bar on the side wall is too far away from the client to provide support for tub entry and exit. Reaching and leaning for support minimizes the leverage a grab bar can provide, and puts the client at risk of injury or fall.

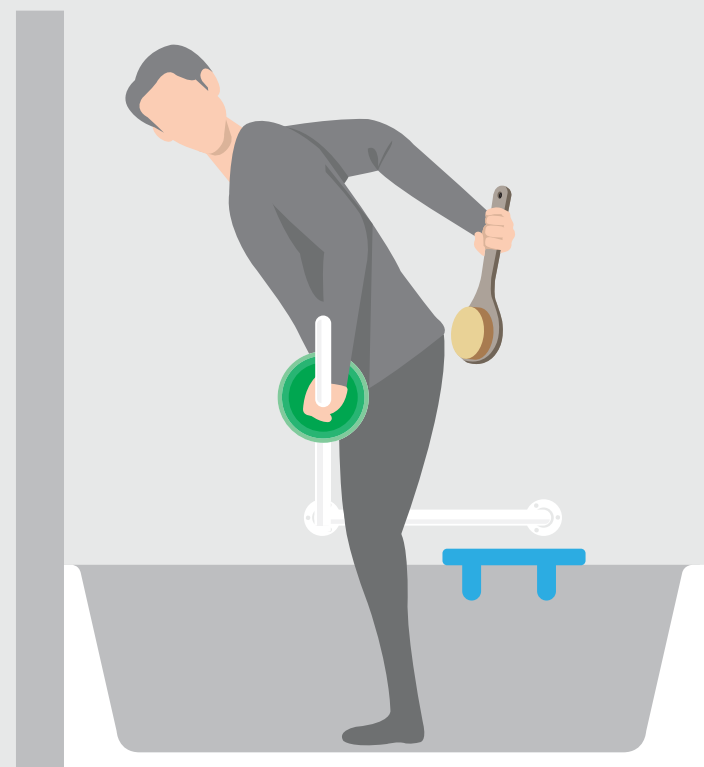


The Dependa-Bar extends across the bathtub to provide support for tub entry and exit, to support the client as they step over the tub threshold. When the rail is not required, it simply moves and locks against the wall.

Support To Lean On.



Wall mounted grab bars do not offer any body leaning support. Grab bars only provide support ~3" from the wall, which can be dangerous to lean against.



When positioned outward from the wall, the Dependa-Bar provides a leaning support for the body. This support allows the client to lean forward with their hands free to bathe themselves.

Fixed Grab Bar



Dependa-Bar

×	Multiple products required to make bathroom safe	✓	One product can service both toilet and tub
×	Typical for one hand grip	✓	Allows gripping options based on leverage needs
×	Provides support on one side (NOT balanced)	✓	Provides centered support to provide optimal balance
×	Reaching ACROSS body for support causes twisting	✓	Can be positioned in-front of client to reduce twisting
×	Reaching FAR AWAY from body offsets balance	✓	Extends across bathtub to reduce reaching
×	Cannot lean body against fixed grab bars	✓	Provides leaning support for independent bathing